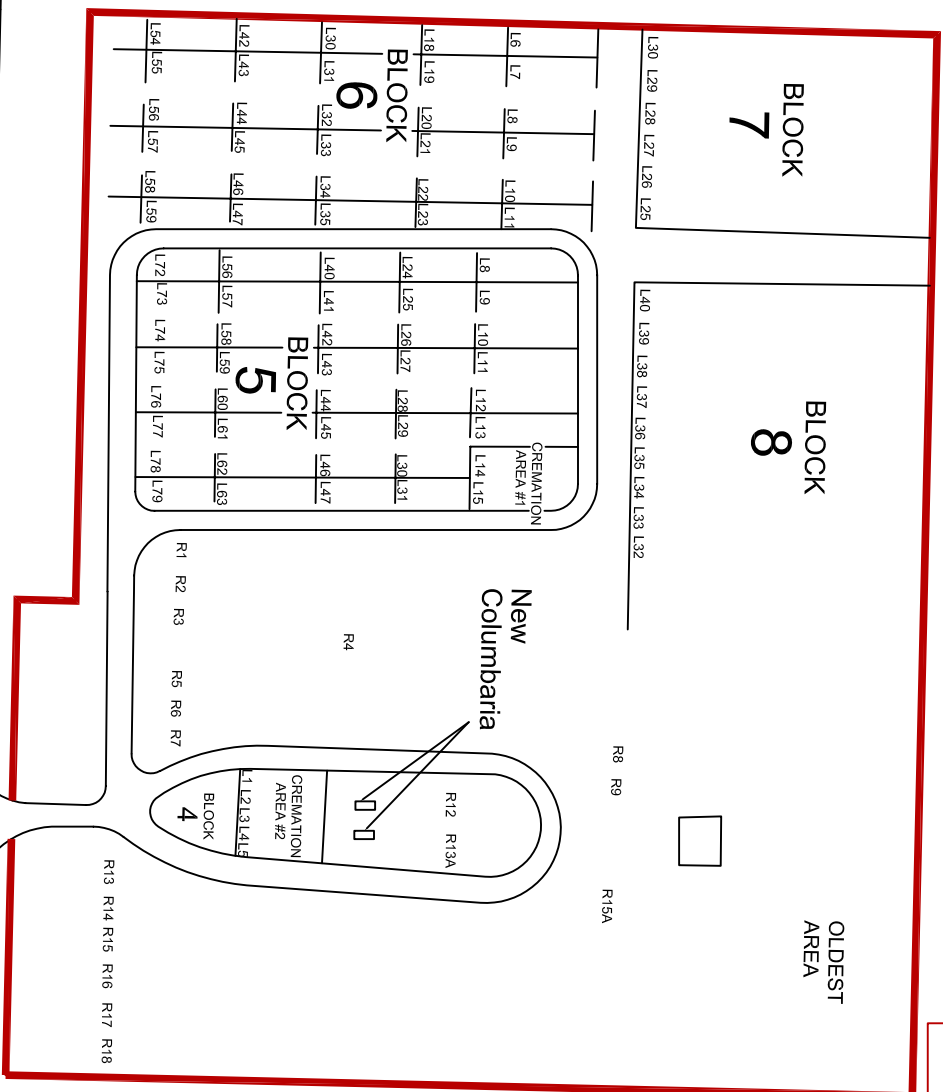




Warman Cemetery

700 Central Street West
 P.O. Box 340
 Warman, SK S0K 4S0
 Phone: 1-(306)-933-2133
 Fax: 1-(306)-933-1987
 e-mail: town.warman@sasktel.net

Effective: June 17, 2010 PG20F2
 N.T.S.



Hwy 305

Main Entrance

Central Street W

Existing Cemetery Detailed Map